

Ultra-Light Helicopter Flight Tests

Solution for data acquisition & analysis - applied by CURTI Costruzioni Meccaniche Spa



© Picture: CURTI

CURTI's two-seater helicopter is manufactured in Castel Bolognese, Italy, headquarters of the CURTI industrial group, a family run business with more than 40 years of experience in the defense and aerospace subcontracting and co-engineering.

The safety rescue system development, validation and product launch phases of this project were co-financed by the EU, under the SME Instrument, Horizon 2020.

Being the only Italian-guided consortium that had made it into the winners list of 16 funded projects, the project features one of the few ultra-light helicopters in the world driven by a turbine engine – lighter, reliable, and with less vibration than traditional piston engines.

The project is developed in close cooperation, as far as engineering and development are concerned, with CURTI partner company Hypertec Solutions, an engineering company of the CURTI Group, which operates in the aerospace industry and is also active in motor sports, oil and gas, energy and automation sectors.

The manufacture of flight parts completely checked and verified with control systems forms part of the know-how of the company - including the use of light-weight alloys, titanium and composites, thus reducing the take-off weight to 450 kg.

Introduction

This document briefly describes the application of the imc data acquisition system used during the flight test sessions of the ultra-light helicopter manufactured by **CURTI Costruzioni Meccaniche Spa. Hypertec Solution Srl** provided technical support in test design and experimentation. The COTS test instrumentation has been supplied by **imc-Italy** (represented by *Instrumentation Devices Srl*).



© Photos: CURTI

Testing the helicopter

The objective of the CURTI technicians for conducting the helicopter flight tests was to perform various kinds of measurements using analog sensors: e.g., *stress, temperature, vibrations, pressures, etc.*

Some sensors were integrated into moving assemblies. In addition to collecting data from analog sensors, digital signals needed to be integrated, such as specific parameters originating from electronic control units (ECUs) and other systems integrated into the aircraft (*combustion engines, avionics, etc.*).

Requirements on the measurement system

Apart from the appropriate sensors, a test and measurement system was needed that could provide extensive functionality to:

- support telemetric sensor technology;
- condition and acquire analog sensor signals;

- interface to standard serial protocols, to acquire digital signals such as parameters from electronic control units;
- perform real-time mathematical calculations on measurement data and data logging for both acquired and calculated channels;
- monitor the test phases in real time.



Instrumented measurement system, © Photos: CURTI

The following is a brief description of the measurement devices supplied by imc Italy, which have enabled CURTI to meet the above mentioned requirements.

Data acquisition system

The platform selected as the tool for signal conditioning, high speed data acquisition and data logging of signals originating from the sensors installed on the helicopter and from the on-board systems, is the **imc CRONOScompact 400-11**, produced by imc Meßsysteme GmbH.

The software that accompanies this device also permits real-time mathematical operations and on-line display of acquired data, in addition to normal post-processing.

Telemetry system

The blades of the helicopter have been instrumented with strain gauges in Wheatstone bridge configurations in order to perform stress measurements.

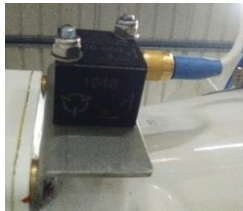
Since the rotor is in rotation relative to the rest of the helicopter, these signals are acquired by using the “CTP8-Rotate” telemetry system produced by the German company, KMT Kraus Messtechnik GmbH.



Vibration measurements

The vibrations in certain parts of the helicopter structure have been recorded with the use of accelerometers.

The sensors chosen for this application were the MEMS-type triaxial accelerometers, model SDI 2476-50, produced by Silicon Designs Inc.



Real-time data display

The installation of a graphics display from imc directly in the cockpit allows for real-time visualization of measurement data.



This permits the direct monitoring of test results and parameters during test flights from on board the helicopter.

Details of the instrumentation used

imc CRONOScompact is a modular data acquisition system, configurable with 4 to 128 analog channels for various types of physical sensors. It allows system sampling rates of up to 400 kS/s, with 100 kHz per channel and A/D conversion to 24/16-bit.



It also supports the synchronous acquisition of digital signals (*event and pulse counting, on/off signals, tachometric signals, and incremental encoder*), parameters from digital bus protocols (CAN, ARINC, IENA, AFDX, etc.) and GPS position.

imc CRONOScompact operates in stand-alone mode, with autonomous real-time processing of acquired data through **imc Online FAMOS**, for calculations of immediately available result parameters.

The storage of both raw and result data is assured on internal removable flash memory (CF card). In stand-alone mode, it may be combined with a graphics display, which permits real-time visualization of acquired and calculated data. imc CRONOScompact may also be operated with direct connection to single or multiple PCs via Ethernet (or WLAN), for on-line graphical and numerical display of test data and for the storage of data on a PC or Server.

imc Online FAMOS, thanks to **DSPs, integrated into the data acquisition equipment**, permits the real-time processing of analysis and result data from acquired channels without using a PC. More than **150 elementary functions** are available to be combined arbitrarily, in order to implement sophisticated and customized evaluation algorithms. It is possible to perform

synchronized mathematical calculations on hundreds of “live” data channels originating from the acquisition.

imc STUDIO is an integrated and flexible modular software environment which can be used in conjunction with any data acquisition and measurement platform from imc.

Following the set-up of the hardware device, it permits the acquisition, processing and real-time display of any combination of analog and digital signals in tests lasting from seconds to an entire year.

Test and measurement procedures can be carried out as either a guided process, interacting with an operator or entirely automatic. Data visualization and customized GUI design is supported by creating display panels using simple drag & drop action.

In combination with the **imc FAMOS signal analysis software**, it is possible to automate data analysis, post-processing and generate test reports.

imc FAMOS is a powerful package for analysis of measurement data and for the visualization and documentation of results.

It includes hundreds of analytical functions and mathematics and features the most versatile and complete selection of graphical and numerical presentation tools.

To perform an operation upon a complete data set (e.g., time series), simply edit the corresponding mathematical expression in an explicit manner, i.e.:

New Parameter = Channel A + Channel B

The result is the new virtual parameter, which may be directly visualized or further processed. Complex analytical algorithms may be organized in automatic sequences, right down to formatted ready-to-print report pages with charts, graphics and texts.

CTP8-Rotate is a telemetry system designed for installation on rotating assemblies, wheel rims and helicopter rotors.

Up to 8 measurement channels for strain gauge sensors in quarter, half and full bridge configuration, potentiometric, ICP/IEPE transducers, thermocouples and voltage signals. It offers a bandwidth of 12 kHz per channel with A/D converter resolution of 16-bit. Versions are available with up to 32 channels.



SDI 2476 is a sturdy triaxial capacitive-type micro-machined accelerometer (MEMS), encapsulated in a small aluminum housing, complete with built-in electronics.

It requires a simple, unregulated power supply between 8 and 32 VDC, and provides a low-noise analog voltage output proportional to the measured acceleration. It is available in the following measurement ranges:

± 2, 5, 10, 25, 50, 100 and 200 g full scale, with a frequency response from DC to 2 kHz.

It can be operated in temperatures from -55°C to +125°C.



Further information

For over 25 years, **imc Meßsysteme GmbH** has been developing, manufacturing and selling hardware and software solutions worldwide in the field of physical measurement technology. Whether in a vehicle, on a test bench or monitoring plants and machinery – data acquisition with imc systems is considered productive, user-friendly and profitable. So whether needed in research, development, testing or commissioning, imc offers complete turn-key solutions, as well as standardized measurement devices and software products.

imc measurement systems work in mechanical and mechatronic applications offering up to 100 kHz per channel with most popular sensors for measuring physical quantities, such as pressure, force, speed, vibration, noise, temperature, voltage or current. The spectrum of imc measurement products and services ranges from simple data recording via integrated real-time calculations, to the integration of models and complete automation of test benches.

Founded in 1988 and headquartered in Berlin, imc Meßsysteme GmbH employs around 180 employees who are continuously working hard to further develop the product portfolio. Internationally, imc products are distributed and sold through our 25 partner companies, specializing in the distribution and local support of its solutions.

imc Meßsysteme GmbH

Voltastr. 5 13355 Berlin, Germany
Phone: +49 (0)30-46 7090-0
Fax: +49 (0)30-46 31 576
hotline@imc-berlin.de
www.imc-berlin.com

Conditions of use

This document is protected by copyright. All rights reserved.

This document may not be edited or modified in any way without permission.

Permission is hereby given to publish and/or reproduce this document.

If you publish it, please include our company name, with a link to our home page, www.imc-italy.com.

Notwithstanding the great care taken in the preparation of the content, this document may contain errors.

If you notice any incorrect information, please let us know at info@imc-italy.com.

We will not be held liable for the accuracy of the information contained herein.

imc-Italy is represented by

Instrumentation Devices Srl.

Founded in 1991, imc Italy has acted as the Italian partner company to imc Meßsysteme since 1993. Active in the sectors of R&D, experimentation and scientific monitoring in the automotive, aerospace, naval energy production, structural sectors...

Via Acquanera 29 - 22100 Como - Italy
Phone: +39.031.525.391 - Fax: +39.031.507.984
info@imc-italy.com - www.imc-italy.com

CURTI Costruzioni Meccaniche Spa, with over 60 years of experience in mechanics, produces automated machines and complex sub-assemblies for various industrial applications.

Today, the company's added value is organized around various divisions, all orientated towards research and innovation in high technology-coefficient sectors.

CURTI Aerospace, for more than 40 years, has been manufacturing mechanical components for the defense and aerospace industry, providing client support covering the entire productive cycle, from the acquisition of the raw materials right down to quality control and non-destructive testing.

The division boasts consolidated experience in the design and manufacture of equipment for the production of parts and assemblies for helicopters, trainer aircraft and troop transport vehicles.

Via Emilia Ponente, 750
Castel Bolognese - 48014 - Ravenna - Italy
Phone: +39 0546 655911 - Fax: +39 0546 655904
info@curti.com - www.curti.com